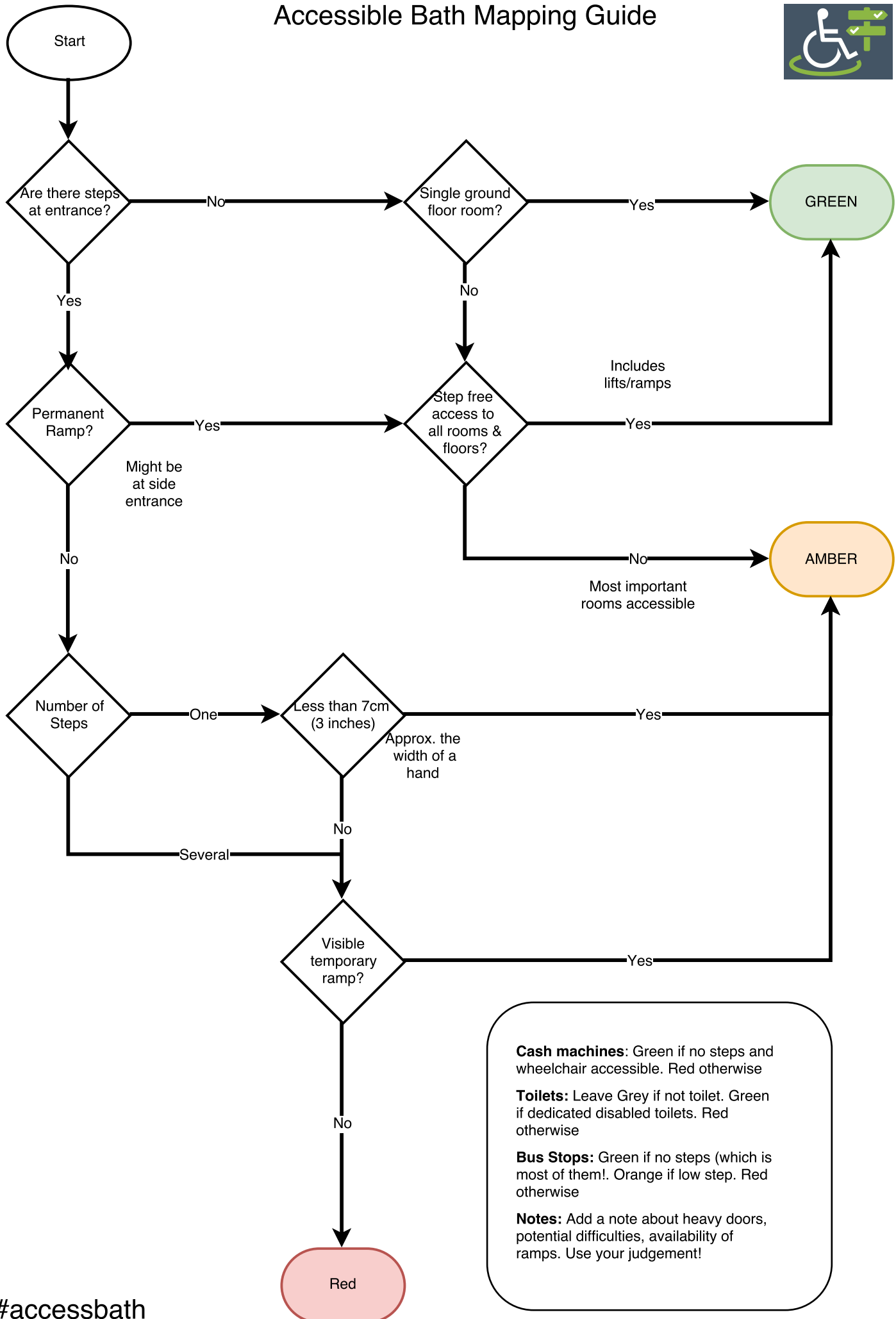


Accessible Bath Mapping Guide



Cash machines: Green if no steps and wheelchair accessible. Red otherwise

Toilets: Leave Grey if not toilet. Green if dedicated disabled toilets. Red otherwise

Bus Stops: Green if no steps (which is most of them!). Orange if low step. Red otherwise

Notes: Add a note about heavy doors, potential difficulties, availability of ramps. Use your judgement!